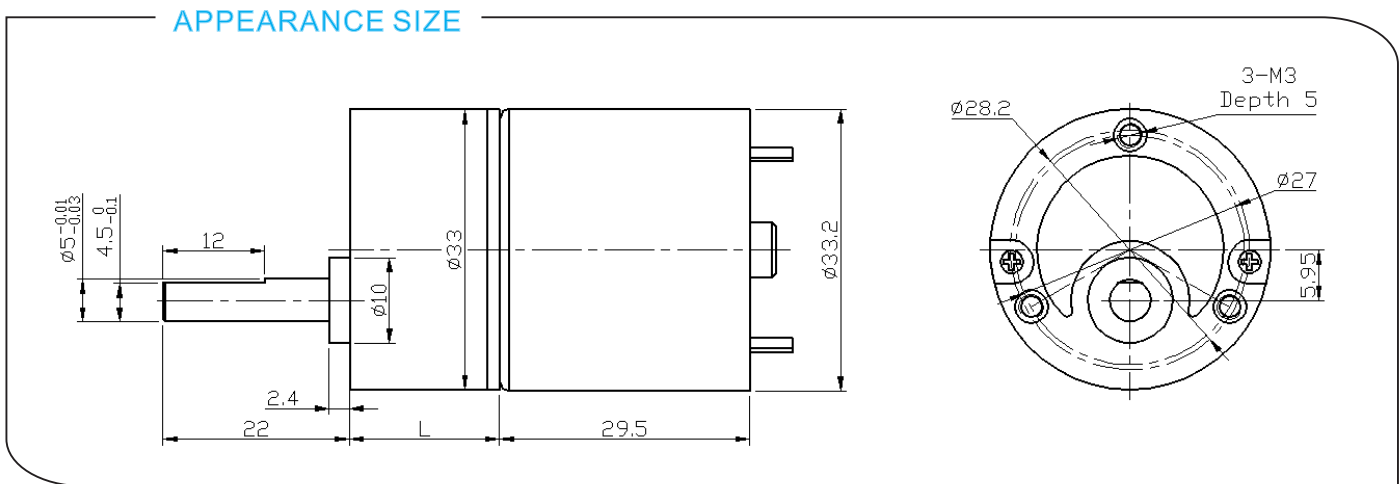


# DS-33RS528 DC SPUR GEAR MOTOR

Main Voltage : 6VDC、12VDC、24VDC

Typical Applications :

Instrument, Electric tools, Coffee machine,  
Vending machine, Massager, Game machine,  
Electric window opener, Automation equipment



## Gearbox Data:

Number of stages	3	4	5	6	7
Reduction ratio	20	50	125	312.5	781
Gearbox length "L" mm	17.7	19.9	22.2	24.4	26.75
Breaking torque(kgf.cm)	10	15	20	24	24
Gearbox efficiency	73%	65%	59%	53%	48%

## Driving Motor Data:

Motor model	Rated Volt.	No load		Load				Stall	
		Current	Speed	Current	Speed	Torque	Output power	Torque	Current
		V	mA	r/min	mA	r/min	gf.cm	W	gf.cm
DS-528-012-3000	12	≤40	3000	≤180	2200	40	0.9	≥160	≥720
DS-528-012-4500	12	≤60	4500	≤350	3300	60	2.0	≥210	≥1400
DS-528-012-6000	12	≤70	6000	≤720	4500	80	3.7	≥300	≥2800
DS-528-024-3000	24	≤15	3000	≤80	2200	40	0.9	≥140	≥320
DS-528-024-4500	24	≤25	4500	≤180	3300	60	2.0	≥210	≥730
DS-528-024-6000	24	≤45	6000	≤360	4500	80	3.7	≥300	≥1400

## Remark:

Gear Motor Torque=Driving motor torque\*Reduction ratio\*Gearbox efficiency;

Gear Motor Speed=Driving motor speed/Reduction ratio

Motor detailed config can be customized according to customer's requests, like voltage, speed, as well as shaft length and shape...

Welcome OEM or ODM projects