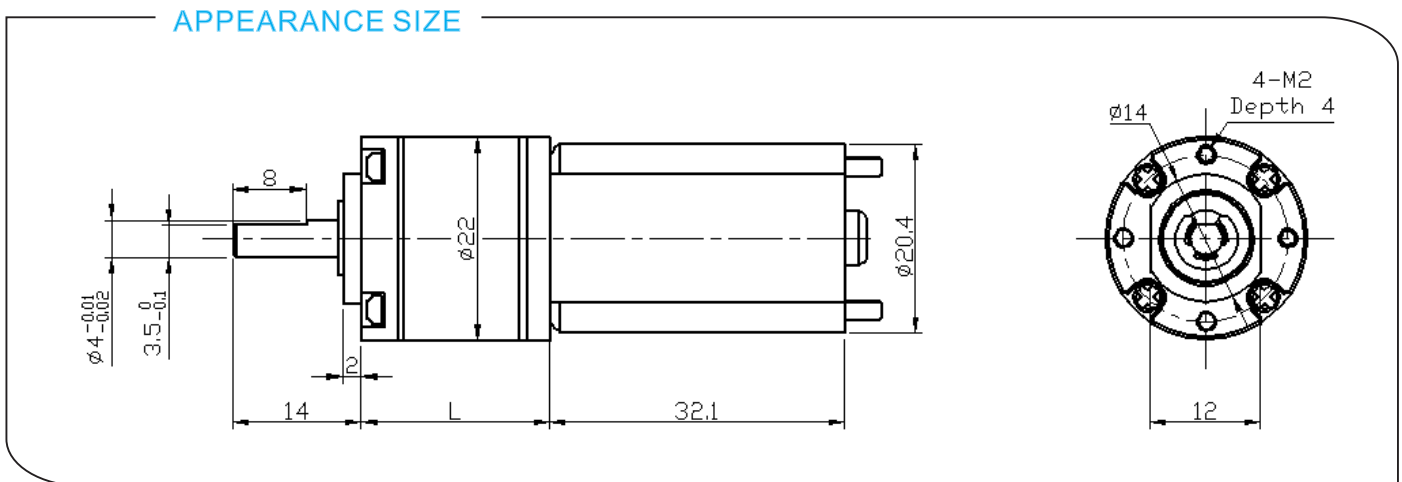


# DS-22RP180 DC PLANETARY GEAR MOTOR

Main Voltage : 3VDC、6VDC、9VDC、12VDC

Typical Applications :

Optical instrument, Surveillance cameras, Automated energy efficiency, Water saving equipment, IC water card, Toys and gifts, Office equipment, Household appliance, automation equipment



## Gearbox Data:

Number of stages	1	2	3	4	5
Reduction ratio	4、4.75	16、19、22.5	64、76 90、107	256、304、361 428、509	1024、1216、1444 1714、2036、2418
Gearbox length "L"mm	13	16.5	20	23.5	27
Breaking torque(kgf.cm)	2	3	4	5	5
Gearbox efficiency	90%	81%	73%	65%	59%

## Driving Motor Data:

Motor model	Rated Volt.	No load		Load				Stall	
		Current	Speed	Current	Speed	Torque	Output power	Torque	Current
		V	mA	r/min	mA	r/min	gf.cm	W	gf.cm
DS-180-006-6000	6	≤65	6000	≤260	5100	15	0.8	≥55	≥1150
DS-180-012-6000	12	≤27	6000	≤150	5100	15	0.8	≥55	≥430
DS-180-012-9000	12	≤80	9000	≤260	7000	20	1.4	≥80	≥1000
DS-180-024-9000	24	≤50	9000	≤150	7800	20	1.6	≥80	≥550

## Remark:

Gear Motor Torque=Driving motor torque\*Reduction ratio\*Gearbox efficiency;  
 Gear Motor Speed=Driving motor speed/Reduction ratio

Motor detailed config can be customized according to customer's requests, like voltage, speed, as well as shaft length and shape...

Welcome OEM or ODM projects